

\$565,000 - 50063 Township Road 234 Road, Rural Rocky View County

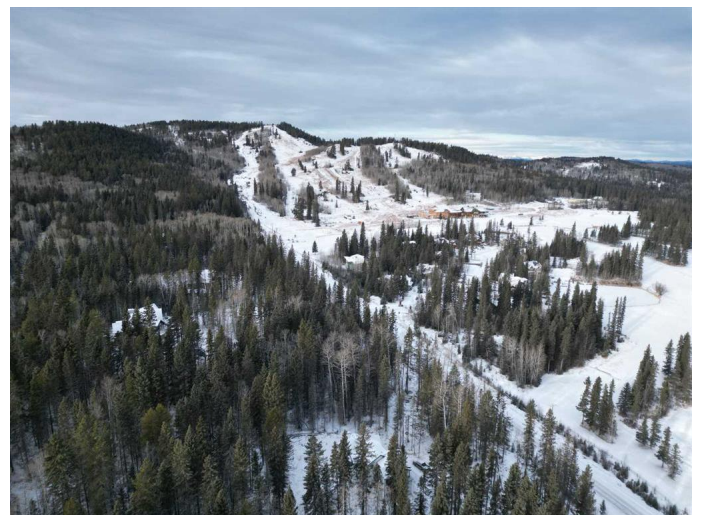
MLS® #A2206377

\$565,000

0 Bedroom, 0.00 Bathroom,
Land on 3.87 Acres

NONE, Rural Rocky View County, Alberta

This beautiful, treed lot overlooks the gorgeous rolling greens of Wintergreen golf course. Come build the home you've always imagined; surrounded by nature, yet only 5 minutes from charming Bragg Creek and 25 minutes from city limits. This 3.87 acre lot has it all-privacy, paved access, a drilled well, and is close to the many recreational possibilities offered by West Bragg Creek and Kananaskis. The current owners have enhanced the land, adding a driveway, improving the well, and clearing many of the trees. Custom building plans are available for purchase. Come and picture the possibilities!



Essential Information

MLS® #	A2206377
Price	\$565,000
Bathrooms	0.00
Acres	3.87
Type	Land
Sub-Type	Residential Land
Status	Active

Community Information

Address	50063 Township Road 234 Road
Subdivision	NONE
City	Rural Rocky View County

County	Rocky View County
Province	Alberta
Postal Code	T0L0K0

Amenities

Utilities	Electricity Available, Natural Gas at Lot Line, Phone Available
-----------	---

Exterior

Lot Description	Other, Private, See Remarks, Near Golf Course, Gentle Sloping, Interior Lot, Many Trees, Near Shopping Center, Paved, Rectangular Lot, Secluded
-----------------	---

School Information

District	Rocky View School Division No. 41
----------	-----------------------------------

Additional Information

Date Listed	March 27th, 2025
Days on Market	44
Zoning	CR

Listing Details

Listing Office	MaxWell Canyon Creek
----------------	----------------------

Data is supplied by Pillar 9â„¢ MLS® System. Pillar 9â„¢ is the owner of the copyright in its MLS® System. Data is deemed reliable but is not guaranteed accurate by Pillar 9â„¢. The trademarks MLS®, Multiple Listing Service® and the associated logos are owned by The Canadian Real Estate Association (CREA) and identify the quality of services provided by real estate professionals who are members of CREA. Used under license.