

\$249,900 - 142 Lee Ridge Road, Edmonton

MLS® #E4435392

\$249,900

3 Bedroom, 1.50 Bathroom, 1,390 sqft

Condo / Townhouse on 0.00 Acres

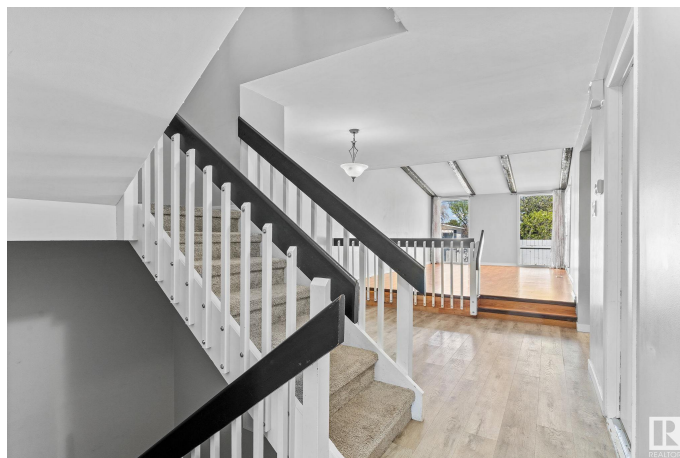
Lee Ridge, Edmonton, AB

ATTENTION FIRST TIME HOME BUYERS & INVESTORS! This conveniently located & excellent floor plan with 3 bedrooms and 1.5 baths is a must see! Vaulted living room ceilings, bright spaces and attached garage! Your very own yard with french doors to the deck! Why rent when you can purchase and start building equity while having enough space for everyone (and your car will be warm during the winter!). Located near schools, a Montessori center and more! The rec centre can be reached with the accessibly transit nearby! *some images virtually staged*

Built in 1975

Essential Information

MLS® #	E4435392
Price	\$249,900
Bedrooms	3
Bathrooms	1.50
Full Baths	1
Half Baths	1
Square Footage	1,390
Acres	0.00
Year Built	1975
Type	Condo / Townhouse
Sub-Type	Townhouse
Style	2 Storey



Status	Active
--------	--------

Community Information

Address	142 Lee Ridge Road
Area	Edmonton
Subdivision	Lee Ridge
City	Edmonton
County	ALBERTA
Province	AB
Postal Code	T6K 0M9

Amenities

Amenities	Deck, Secured Parking, Storage-In-Suite, See Remarks
Parking Spaces	2
Parking	Single Garage Attached

Interior

Interior Features	ensuite bathroom
Appliances	Dishwasher-Built-In, Dryer, Garage Control, Garage Opener, Microwave Hood Fan, Refrigerator, Stove-Electric, Washer, Window Coverings
Heating	Forced Air-1, Natural Gas
Stories	2
Has Basement	Yes
Basement	Full, Unfinished

Exterior

Exterior	Wood, Vinyl
Exterior Features	Fenced, Flat Site, Golf Nearby, Landscaped, Playground Nearby, Public Transportation, Schools, Shopping Nearby
Roof	Asphalt Shingles
Construction	Wood, Vinyl
Foundation	Concrete Perimeter

School Information

Elementary	Lee Ridge School
Middle	Edith Rogers School
High	W. P. Wagner School

Additional Information

Date Listed	May 8th, 2025
-------------	---------------

Days on Market	2
Zoning	Zone 29
Condo Fee	\$300

DATA IS DEEMED RELIABLE BUT IS NOT GUARANTEED ACCURATE BY THE REALTORS® ASSOCIATION OF EDMONTON. COPYRIGHT 2025 BY THE REALTORS® ASSOCIATION OF EDMONTON. ALL RIGHTS RESERVED. Trademarks are owned or controlled by the Canadian Real Estate Association (CREA) and identify real estate professionals who are members of CREA (REALTOR®, REALTORS®) and/or the quality of services they provide (MLS®, Multiple Listing Service®)

Listing information last updated on May 10th, 2025 at 5:32am MDT