

\$159,900 - 1006 9929 113 Street, Edmonton

MLS® #E4427496

\$159,900

1 Bedroom, 1.00 Bathroom, 846 sqft

Condo / Townhouse on 0.00 Acres

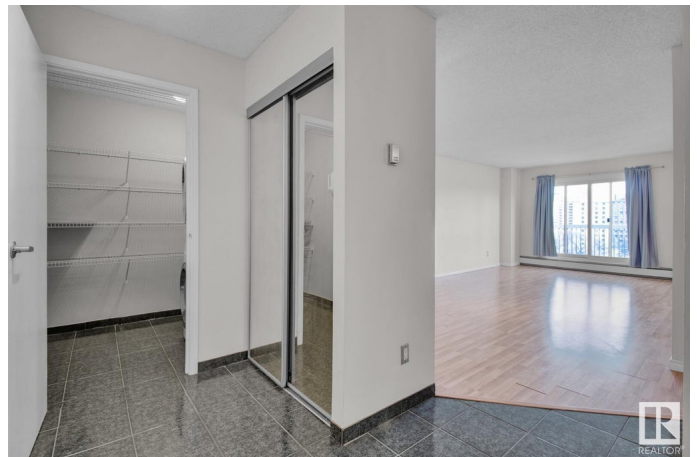
Wøhkwäntåwin, Edmonton, AB

TOP FLOOR PENTHOUSE UNIT W/
UNDERGROUND PARKING! Located on a
quiet street in Oliver, only minutes from coffee
shops, restaurants, public transportation, and
everything else downtown has to offer. You
can not beat this location. Upon entering the
unit, you will love the spacious entryway, and
all the natural light from the large windows and
glass patio doors along the back. Through the
patio door, you±ll find a balcony that
extends almost the entire width of the unit.
The kitchen has loads of cabinetry, and
stainless steel appliances. The bedroom has
a full sized closet, plenty of space for a king
bed, and is right beside the 4pc bathroom.
Other features include: In suite laundry in a
spacious storage room, underground parking
& visitor parking. Condo fees include heat, the
common areas maintenance, professional
property management; reserve fund
contribution & water / sewage. For more details
please visit the REALTOR±sä Website.

Built in 1981

Essential Information

MLS® #	E4427496
Price	\$159,900
Bedrooms	1
Bathrooms	1.00



Full Baths	1
Square Footage	846
Acres	0.00
Year Built	1981
Type	Condo / Townhouse
Sub-Type	Apartment High Rise
Style	Single Level Apartment
Status	Active

Community Information

Address	1006 9929 113 Street
Area	Edmonton
Subdivision	WÃ©hkwÃ¢ntÃ´win
City	Edmonton
County	ALBERTA
Province	AB
Postal Code	T5K 2N9

Amenities

Amenities	On Street Parking, Exercise Room, Parking-Visitor, Recreation Room/Centre, Social Rooms, Storage-In-Suite
Parking Spaces	1
Parking	Heated, Parkade, Underground

Interior

Appliances	Dishwasher-Built-In, Dryer, Microwave Hood Fan, Refrigerator, Stove-Electric, Washer, Window Coverings, See Remarks
Heating	Hot Water, Natural Gas
# of Stories	10
Stories	1
Has Basement	Yes
Basement	None, No Basement

Exterior

Exterior	Concrete, Brick
Exterior Features	Golf Nearby, Landscaped, Playground Nearby, Public Swimming Pool, Public Transportation, River Valley View, Schools, Shopping Nearby, View City, View Downtown
Roof	Tar & Gravel

Construction	Concrete, Brick
Foundation	Concrete Perimeter

School Information

Elementary	Oliver/St Catherine
Middle	Westminster/St Catherine
High	Victoria/St Joseph

Additional Information

Date Listed	March 26th, 2025
Days on Market	45
Zoning	Zone 12
Condo Fee	\$636

DATA IS DEEMED RELIABLE BUT IS NOT GUARANTEED ACCURATE BY THE REALTORS® ASSOCIATION OF EDMONTON. COPYRIGHT 2025 BY THE REALTORS® ASSOCIATION OF EDMONTON. ALL RIGHTS RESERVED. Trademarks are owned or controlled by the Canadian Real Estate Association (CREA) and identify real estate professionals who are members of CREA (REALTOR®, REALTORS®) and/or the quality of services they provide (MLS®, Multiple Listing Service®)

Listing information last updated on May 10th, 2025 at 7:47am MDT