

\$449,900 - 5116 58 Avenue, Tofield

MLS® #E4419458

\$449,900

5 Bedroom, 2.00 Bathroom, 1,720 sqft

Single Family on 0.00 Acres

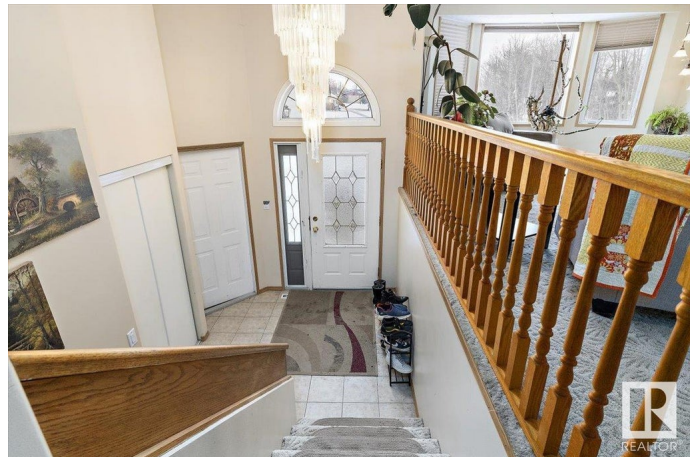
Tofield, Tofield, AB

A rare find!!! 1700 sq/ft bilevel with double attached garage on 1.98 acres in the charming community of Tofield! Land is subdividable and is zoned R-LD which would accomodate low density residential housing. Open concept design of living and dining area greets you upon entering this great family home. Kitchen features: white cabinetry, pantry, island, and access to west-facing deck. 3 generous size bedrooms and 5pc bathroom completes the main floor. Basement consists of family room with wet bar, 2 bedrooms, 4pc bathroom, and laundry room. Recent upgrades include basement flooring and painting. Huge yard is perfect for entertaining and large gatherings. Your own acreage within town limits! A must see !!!

Built in 1999

Essential Information

MLS® #	E4419458
Price	\$449,900
Bedrooms	5
Bathrooms	2.00
Full Baths	2
Square Footage	1,720
Acres	0.00
Year Built	1999



Type	Single Family
Sub-Type	Detached Single Family
Style	Bi-Level
Status	Active

Community Information

Address	5116 58 Avenue
Area	Tofield
Subdivision	Tofield
City	Tofield
County	ALBERTA
Province	AB
Postal Code	T0B 4J0

Amenities

Amenities	Deck, Fire Pit
Parking	Double Garage Attached

Interior

Appliances	Dishwasher-Built-In, Garage Control, Garage Opener, Refrigerator, Storage Shed, Stove-Electric, Window Coverings
Heating	Forced Air-1, Natural Gas
Stories	2
Has Basement	Yes
Basement	Full, Finished

Exterior

Exterior	Wood, Vinyl
Exterior Features	Flat Site, Private Setting, Schools, Subdividable Lot
Roof	Asphalt Shingles
Construction	Wood, Vinyl
Foundation	Concrete Perimeter

School Information

Elementary	C.W.Sears Tofield (K-4)
Middle	Tofield (5-9)
High	Tofield

Additional Information

Date Listed	January 27th, 2025
-------------	--------------------

Days on Market 103

Zoning Zone 80

DATA IS DEEMED RELIABLE BUT IS NOT GUARANTEED ACCURATE BY THE REALTORS® ASSOCIATION OF EDMONTON. COPYRIGHT 2025 BY THE REALTORS® ASSOCIATION OF EDMONTON. ALL RIGHTS RESERVED. Trademarks are owned or controlled by the Canadian Real Estate Association (CREA) and identify real estate professionals who are members of CREA (REALTOR®, REALTORS®) and/or the quality of services they provide (MLS®, Multiple Listing Service®)

Listing information last updated on May 10th, 2025 at 7:02pm MDT