

\$698,000 - 4700 45 St, Stony Plain

MLS® #E4349441

\$698,000

Bedroom, Bathroom,
Land Commercial on 2.41 Acres

None, Stony Plain, AB

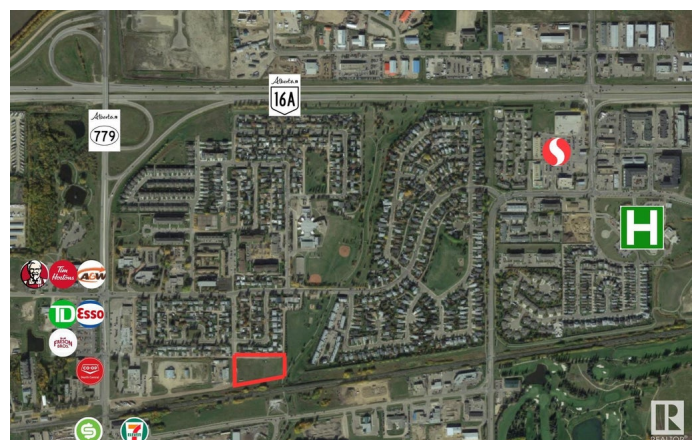
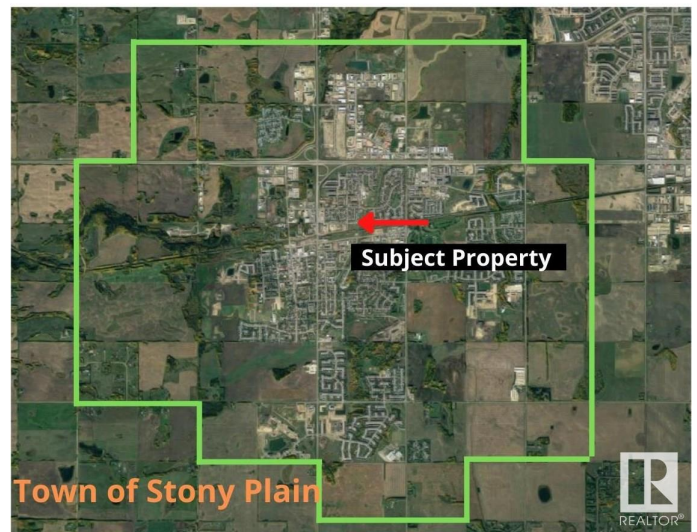
RESIDENTIAL LAND ready for development or use as is. 2.41+/- acres of bare land. Within walking distance to 24 hour Freson Bros grocery store, medical professionals, health services, CoOp Gas Station, KFC, Tim Horton's, A&W, Safeway and hospital (Westview Health Centre) is nearby! Walking distance to Stony Plain's newly revitalized downtown. This property is zoned R6 - Residential Comprehensively Planned District, with the possibility of building high-density buildings; some previous testings and drawings available. This land is surrounded by single family homes and next to green space. This is an excellent location with Highways 16A and 779 in close proximity, getting around town is quick and easy!

Essential Information

MLS® #	E4349441
Price	\$698,000
Acres	2.41
Type	Land Commercial

Community Information

Address	4700 45 St
Area	Parkland
Subdivision	None
City	Stony Plain



Province AB
Postal Code T7Z 1J2

Additional Information

Date Listed July 10th, 2023
Zoning R6

DATA IS DEEMED RELIABLE BUT IS NOT GUARANTEED ACCURATE BY THE REALTORS® ASSOCIATION OF EDMONTON. COPYRIGHT 2024 BY THE REALTORS® ASSOCIATION OF EDMONTON. ALL RIGHTS RESERVED.Trademarks are owned or controlled by the Canadian Real Estate Association (CREA) and identify real estate professionals who are members of CREA (REALTOR®, REALTORS®) and/or the quality of services they provide (MLS®, Multiple Listing Service®)
Listing information last updated on May 19th, 2024 at 11:46pm MDT