

\$2,151,000 - 15320 Mark Messier Tr Nw, Edmonton

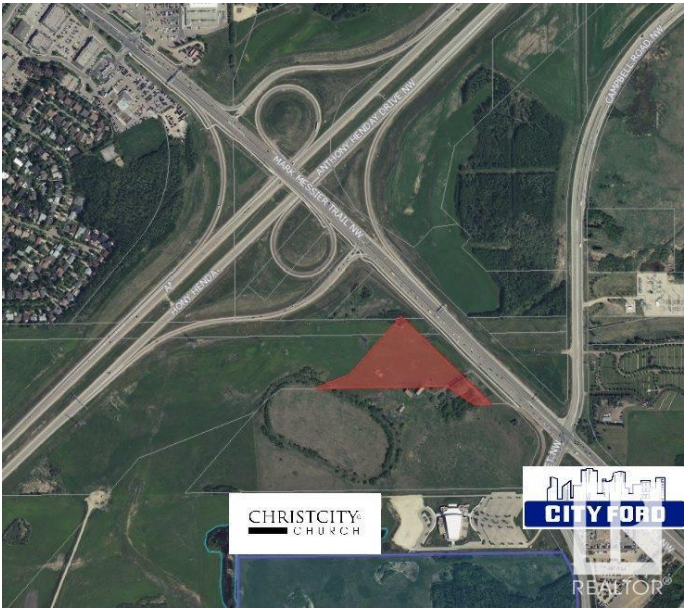
MLS® #E4223098

\$2,151,000

Bedroom, Bathroom,
Land Commercial on 7.17 Acres

Anthony Henday Mistatim, Edmonton, AB

7.17 acres of land with direct exposure to Mark Messier Trail which has approximately 32,500 AAVPD (2017). Easy access to Anthony Henday and St. Albert. Potential for commercial, industrial or urban service uses.



Essential Information

| | |
|--------|-----------------|
| MLS® # | E4223098 |
| Price | \$2,151,000 |
| Acres | 7.17 |
| Type | Land Commercial |

Community Information

| | |
|-------------|--------------------------|
| Address | 15320 Mark Messier Tr Nw |
| Area | Edmonton |
| Subdivision | Anthony Henday Mistatim |
| City | Edmonton |
| Province | AB |
| Postal Code | T6V 1H5 |

Additional Information

| | |
|-------------|---------------------|
| Date Listed | December 14th, 2020 |
|-------------|---------------------|

DATA IS DEEMED RELIABLE BUT IS NOT GUARANTEED ACCURATE BY THE REALTORS® ASSOCIATION OF EDMONTON. COPYRIGHT 2024 BY THE REALTORS® ASSOCIATION OF EDMONTON. ALL RIGHTS RESERVED. Trademarks are owned or controlled by the Canadian Real Estate Association (CREA) and identify real estate professionals who are members of CREA (REALTOR®, REALTORS®) and/or the quality of services they provide (MLS®, Multiple Listing Service®)

Listing information last updated on May 18th, 2024 at 9:46pm MDT